

Oak Mountain State Park Pelham, Alabama

Mountain Bike Trail Map

version 2.1a
7-21-2010
Oak Mtn State Park
205-620-2520



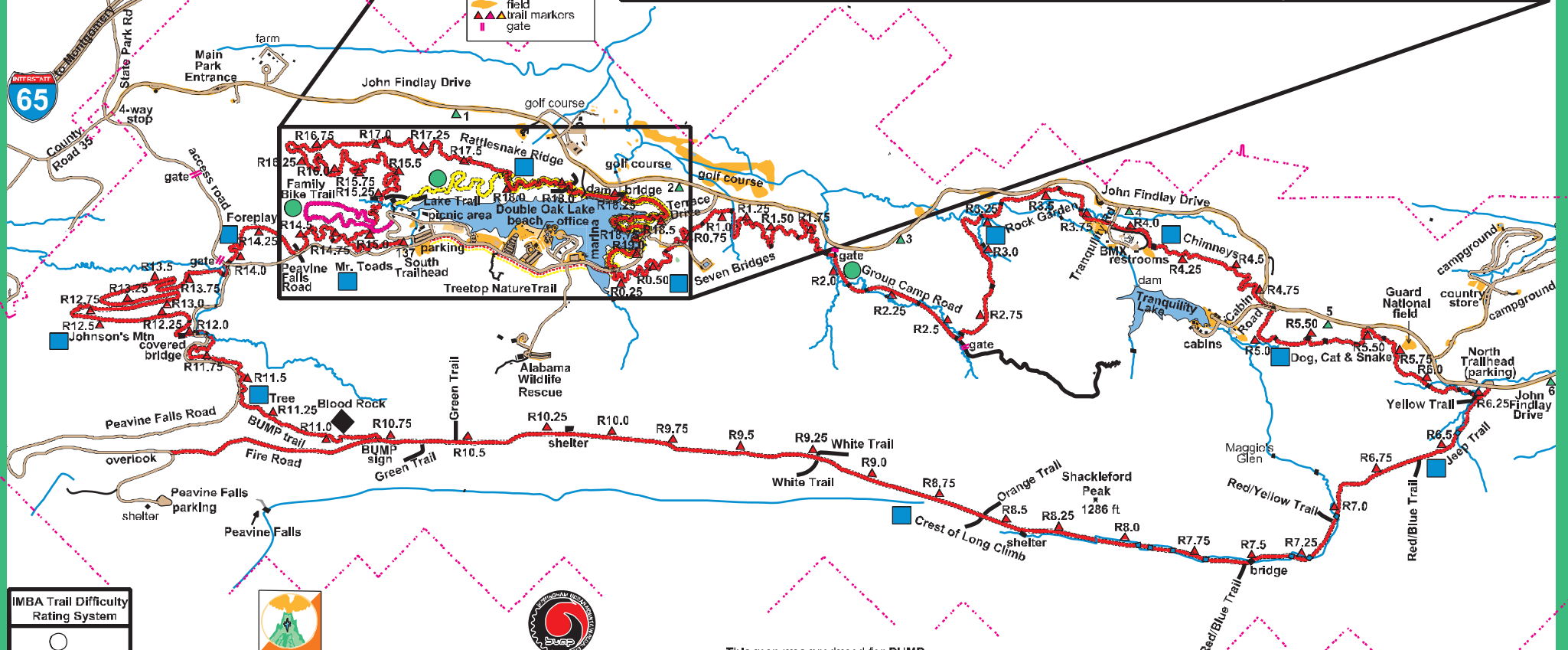
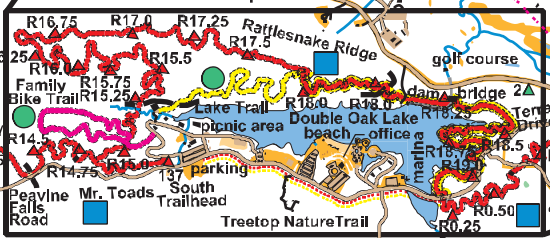
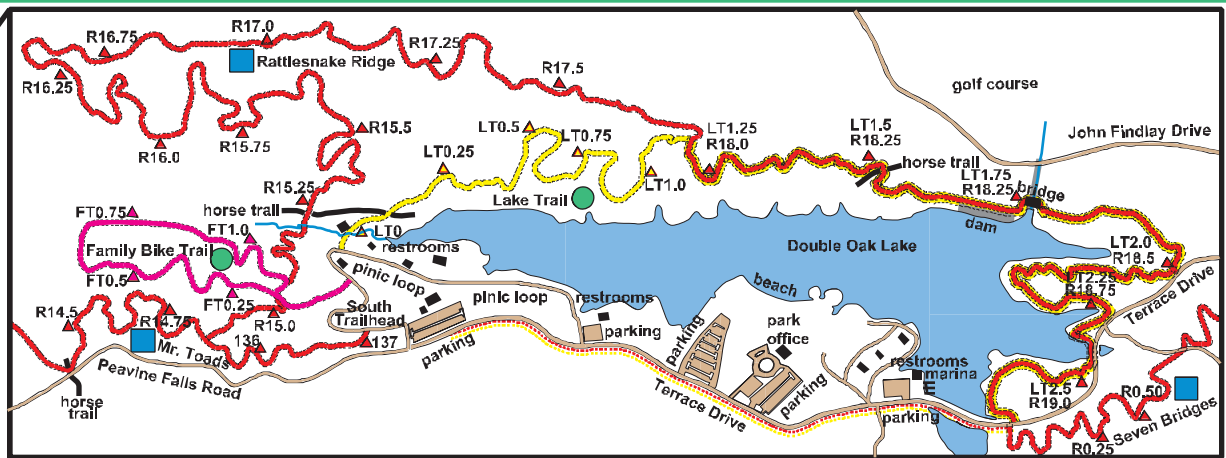
map scale: 1:35,000



- N. Trailhead to marina (141-164) 6.0 mi
- N. Trailhead to S. Trailhead (100-137) 10.8 mi
- S. Trailhead to marina (paved road) 0.9 mi
- Rattlesnake Ridge bike trail total 3.3 mi
- Lake Trail 21.0 mi
- Peavine Falls Road 3.5 mi

LEGEND

- park boundary
- paved road
- dirt road/trail
- family bike trail
- lake bike trail
- bike trail
- water crossing
- bridge
- stream
- field
- trail markers
- gate



IMBA Trail Difficulty Rating System

- Easiest
- Easy
- More Difficult
- Very Difficult
- Extremely Difficult

Vulcan Orienteering Club
WWW.VULCANORIENTEERING.ORG

Birmingham Urban Mountain Pedalers
WWW.BUMP.ORG

This map was produced for BUMP
by the Vulcan Orienteering Club © 2010

